



"A Pic-Nic Party" by Thomas Cole, 1846

Dupontscapes

Dupontscapes looks at the past of the Dupont Circle as a gathering space and proposes to enhance and reimagine the circle as an inclusive public space to work and play. The concept of the picnic as a peaceful form of collective discussion and gathering serves as our inspiration for designing a wide range of public landscapes that will bring the locals back to the circle.

Our architecture proposal challenges the existing spatial organization of Dupont circle by superimposing a new spatial arrangement logic that is inspired by both the works of Isamu Noguchi and the flexible modular grid system of No-Stop City by Archizoom.

The proposal is centred around the idea of "picnic" or "picnicking", a French originated word and an activity popularised after the French

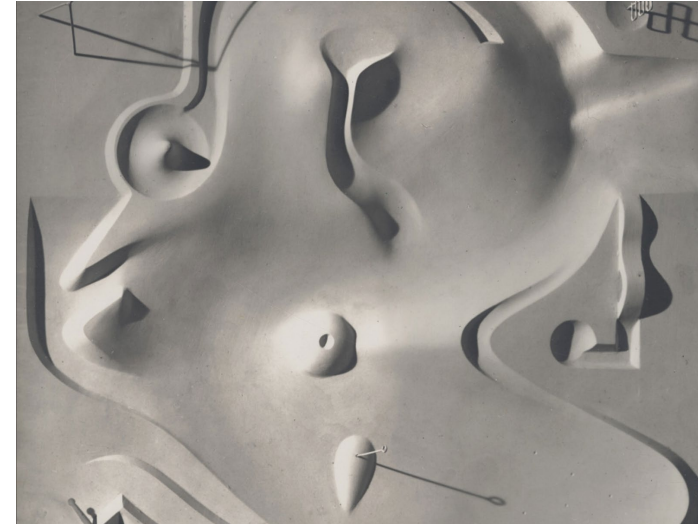


"Non stop city internal landscape", Archizoom Associati, 1970

Revolution. With no particular host, the gathering can vary from an intimate occasion of two to a more social scenario of dozens of people, in which all members bring food and talk freely in a scenic surrounding.

Following the spatial logic of picnic, We envision a landscape that is tightly interwoven with the existing urban fabric of Dupont circle. It is achieved by establishing a grid system which anchors on key existing features including trees, drinking fountains, lampposts and the central fountain. Designed furnitures will turn existing trees into 'Hubs', providing facilities and charging stations for working in nature. Treated as part of the landscape, each type of furniture creates a different programmatic use by establishing datums.

Designed as a flexible landscape that can transform according to public need, a network of rails on the floor will establish an urban furniture



Model for Contoured Playground, Isamu Noguchi, 1941

system with movable benches, stools and bins. The furniture can be pulled along the rails to create different scales of gathering, from a one-to-one meeting to a TED talk.

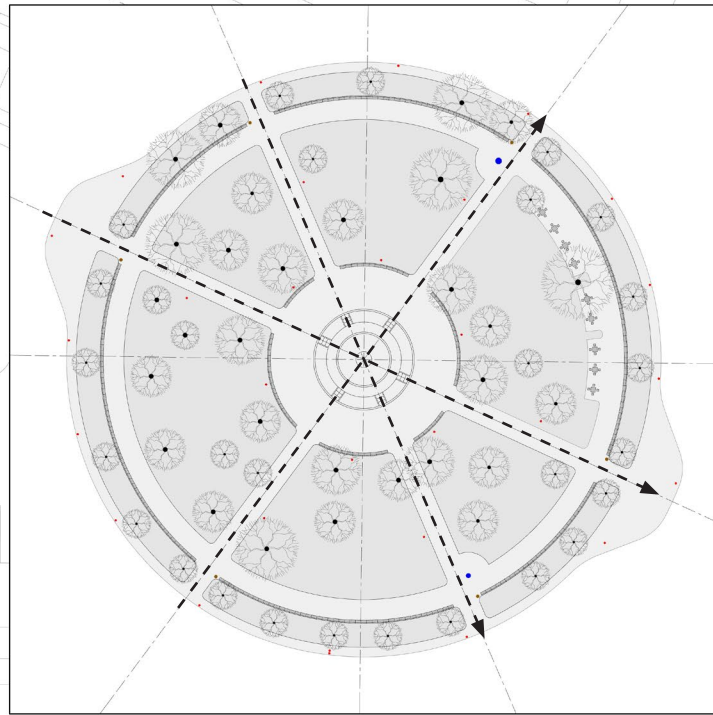
The sense of movement would be enhanced at night when the network is illuminated to guide the visitors. In addition, the grid also creates a camouflage-like landscape pattern with hard surfaces, grassland and bushes, raised and sunken landforms, which will become natural "stages" for acts of gathering.

Following the overarching principle of picnic, the micro part of the proposal creates landforms that split into a multitude of programmes: a podium for public speaking, a shared solid line for social interaction, a series of planted seatings that create tables with charging stations for outside working. The gallery entrance for Dupont underground on one end emerges above as a part of the landscape, and surprising visitors on

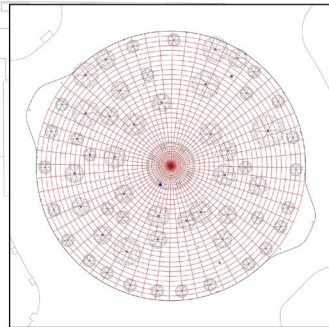
the other end with a glowing entrance, serving as a focal point of the proposal. The Landscape forms are strategically planted with vegetation to create a continuous green space connecting the 19th Street NW to the Dupont Circle.

The landscape is connected together by ground LED strips that guide the visitors, creating a warm and welcoming evening environment. Entrance is lit up by an LED panel integrated into the ceiling that will be able to project videos and images of upcoming shows, as well as lit up the space during the night.

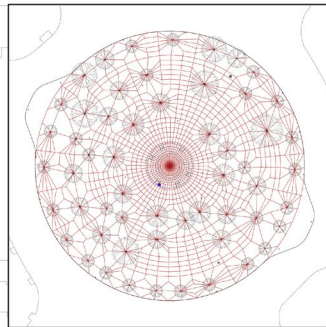




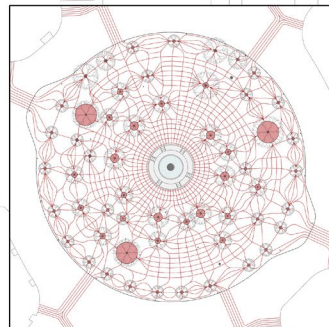
Original Plan



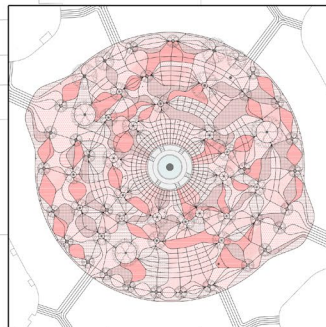
A Radial Grid Overlaid



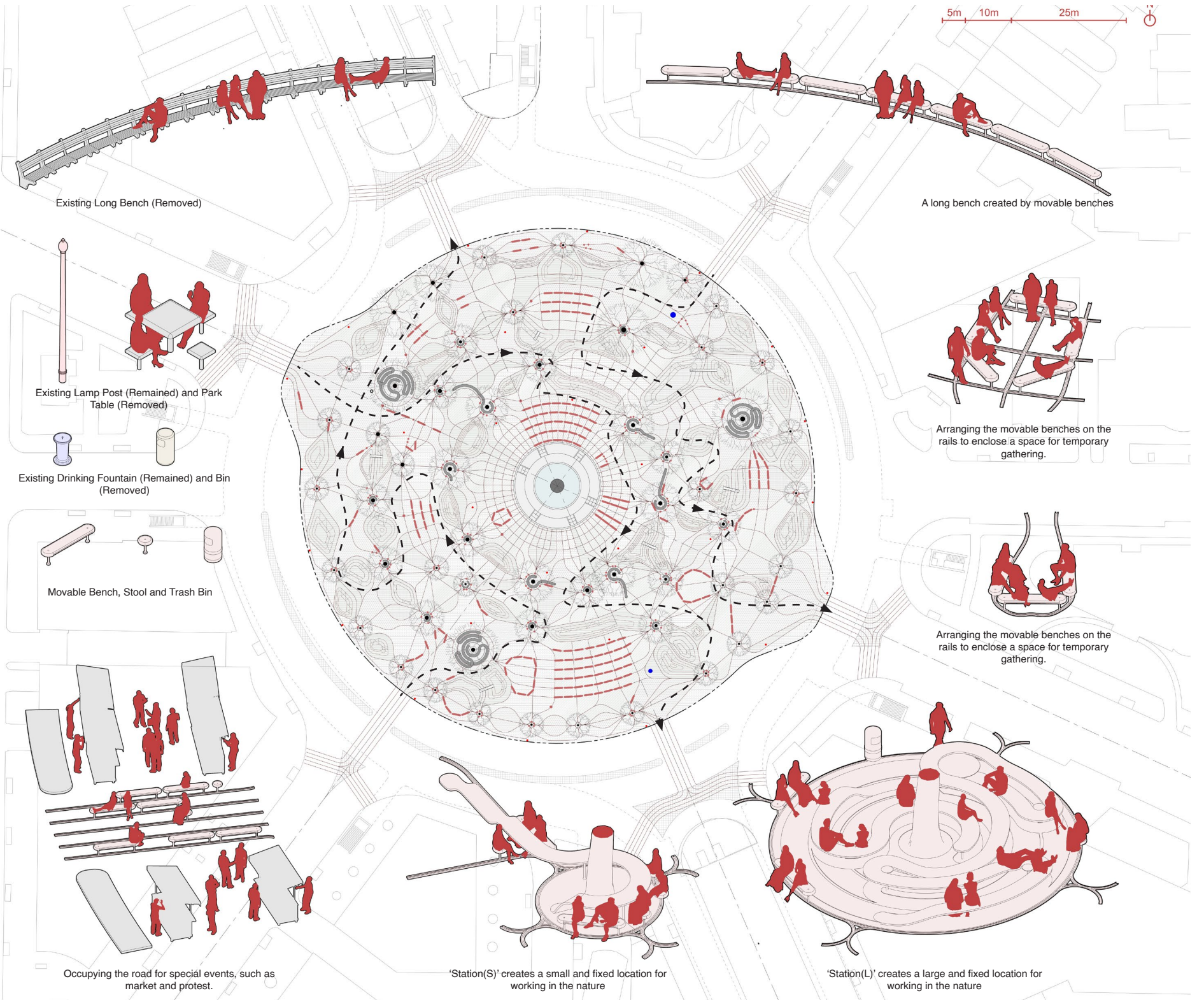
Grid Points Attracted by the Trees



Tree Nodes in Varied Sizes



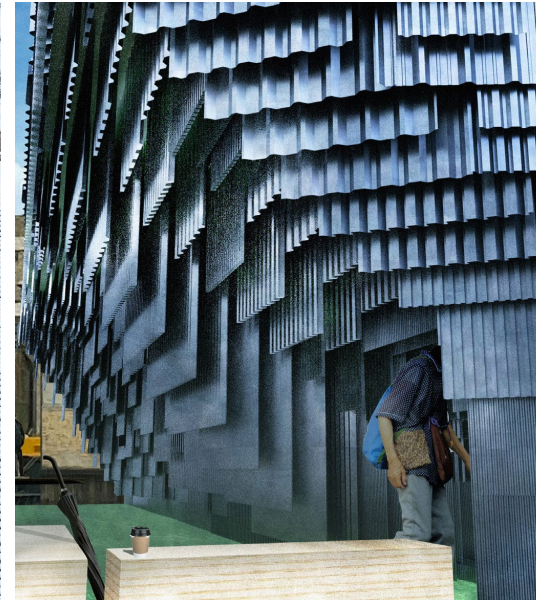
Pattern with Different Finishings





Micro Element





TEAM LYYK

We are a group of emerging designers based in London who have a wide range of practical and theoretical knowledge. We believe that our proposal can transform Dupont Circle in a meaningful way that can benefit all the members of the local community and create a pleasant versatile modern space. We come from a range of different backgrounds and have a wide set of skills ranging from construction experience, to image and video production.

Kevin Leung

During his study at the Architectural Association from 2013 to 2019, Kevin has established a deep interest into the definition of 'Nature' in the discourse of architecture. His research and work has been published in several publications including Koozarch.

Kevin currently works at ACME in London, where he was involved in various projects, including the award winning Bumpers Hall in Marden, Kent.

Contact information

Kevin Leung
+44(0) 7876377414
Flat 7, 71D Drayton Park, N5 1DG

Ke Yang

Previously studied at the Bartlett School of Architecture (2014-2017) and the Architectural Association (2018-2020), Ke is currently working for Zaha Hadid Architects in London and gaining experience to be an qualified architect in the UK. In prior to this, He also worked for Mamou-mani Architects in London and a number of practices in China, where he was involved in projects in different scales and sectors, from installations, outdoor pavilions to warehouse renovations and mixed-use developments.

Yi Ying Wu

Currently working in Zaha Hadid Architects, Yiyong have graduated from the Architectural Association DRL where she mainly studied robotic architectures and the utilization of artificial intelligence in architecture aspects. She also has practical experience in various sectors from interactive installations to buildings.

The installation 'Float' won the first prize of URS Interactive Public Art Installation Design Competition 2020 and estimate to be built in 2021.

Yana Kushpitovska

Originally from Ukraine Yana has studied at the Architectural Association (2014-2020), where she developed strong interest in the role that architecture plays in education and knowledge consumption. Her thesis project explored possibilities of turning any public space into an endless museum.

Yana currently works in Foster + Partners and is based in London. She has previously worked in Ukraine on a range of projects, from masterplans to interior set to be completed in 2021.